



My Pal Scout



My Pal Violet



Learning with a personal touch!

Quick Connect Guide & Parent Instructions

This guide contains important information. Please keep it for future reference.



Share the Learning

Visit leapfrog.com/learningpath
to see the skills your child is exploring
during play.



Share your special learning moments!
Like us at facebook.com/leapfrog

The LeapFrog® Learning Path is not available in all countries.

Register your product online!

You can also sign up to receive learning
progress updates, articles, product news and
special offers from LeapFrog.

leapfrog.com

Fun next steps on your child's path to learning!

I can learn
your name!

**My Pal Scout
or Violet**
6-36 months



To be there every step of the way.

It's a hope you have for your child and one that LeapFrog shares. As children play with My Pal Scout or Violet, friendly activities encourage them to talk and sing along, developing language skills and starting them on the path to literacy. Get more ideas to support your child's learning at leapfrog.com/learningpath

Tag™ Junior
book pal*
2-4 years



Text & Learn*
3+ years



Fridge Phonics™
magnetic alphabet*
2+ years

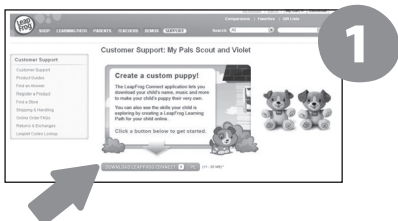


Tag™
Reading System*
4-8 years

*Products sold separately. All products may not be available in all countries. Actual products may vary.

QUICK CONNECTION GUIDE

Three simple steps to set up your custom puppy!



Go to leapfrog.com/MyPals and click the "Download LEAPFROG® Connect" link to install the LEAPFROG Connect Application for My Pal Scout and Violet.

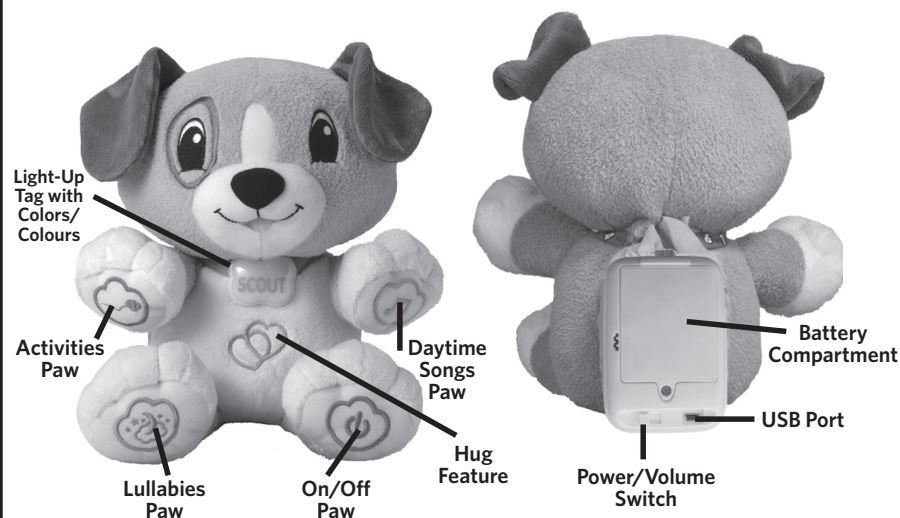


Plug the included USB cable into Scout or Violet and then connect the puppy to your computer. Connection will launch the application. The USB port is in the lower right-hand corner of the battery box located in the back of the puppy. Make sure the Power/Volume Switch on the battery box is in the On position.



Follow the on-screen directions to create or sign in to your LEAPFROG Parent Account. Go to the My Pals Scout and Violet Home page and click on the "Get Started" button.

DETAILED CONNECTION GUIDE: GETTING STARTED



CUSTOMIZING/CUSTOMISING YOUR PUPPY PAL!

Before you play with or connect your puppy, remove the plastic pull tab from the back of My Pal Scout or Violet and discard.

I. Install the LEAPFROG® Connect Application

The LEAPFROG Connect Application enables you to download the spelling of your child's name, familiar well-loved melodies and your child's favorite/favourite food, animal and color/colour to your child's puppy pal! My Pals Scout and Violet can also pronounce many, but not all children's names. You can also create a personal LEAPFROG® Learning Path for your child online, letting you see the skills your child is exploring, get learning ideas that are tailored to your child and more.

Note: If you already have the LEAPFROG Connect Application installed for another LEAPFROG Connected device, you will still need to download and install the application to personalize/personalise My Pal Scout or Violet.

To install:

1. Open an Internet browser on your computer and go to leapfrog.com/MyPals
2. Click the link to download the My Pal Scout or Violet LEAPFROG Connect Application to your PC or Mac® computer.
3. Run the installation program. On-screen instructions will guide you through the full installation process.

II. Download personalized/personalised content and choose the music!

Once you have installed the LEAPFROG® Connect Application, you can download personalized/personalised audio for My Pal Scout or Violet quickly and easily:

Please read Safety Instructions before proceeding.

Veillez lire les consignes de sécurité avant de commencer.

1. Open the Velcro® fastening on the back of the puppy to view the battery box and USB port.

Note: The Power/Volume switch must be in the ON position in order to connect to the computer.

2. Plug the included USB cord into the port.

3. Connecting My Pal Scout and Violet to the computer will automatically launch the LEAPFROG Connect Application. If it does not launch, simply find the LEAPFROG Connect Application on your desktop and double-click the icon. Make sure you are connected to the Internet.

4. Follow the on-screen directions to set up a LEAPFROG parent account and enter your child's information.

5. Select the My Pals Scout and Violet button in LEAPFROG Connect to enter the My Pals Scout and Violet view.

• **My Name:** Scout or Violet can express love and friendship to your child by name. Select your child's name from a list of thousands in the My Name tab. Scout or Violet will also spell your child's name and encourage your child to spell it, too!

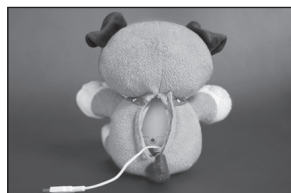
• **My Picks:** You can personalize/personalise the learning by teaching Scout or Violet your child's favorite/favourite animal, food and color/colour.

• **My Music:** My Pal Scout or Violet can store up to five lullaby melodies, five daytime melodies and five sing-along songs to play for your child. Choose your favorites/favourites from a list of 40+ melodies and sing-along songs to download to Scout or Violet. You can change them anytime!

• **My Printables:** Print a Puppy Adoption Certificate for your child, plus lyrics and coloring/colouring pages featuring your puppy friends!

6. Once file saving is complete, click Eject on the screen. The LEAPFROG Connect Application will notify you when it's safe to remove the USB cable.

Note: My Pal Scout or Violet will not function when the USB cable is plugged into the USB port.



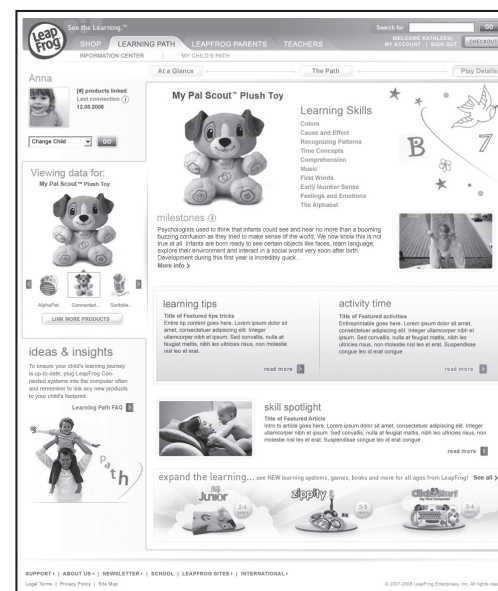
If you can't find your child's name press the Lightbulb for some search tips.

7. To begin playing, turn on My Pal Scout or Violet by sliding the Power/Volume switch located on the battery box inside the puppy to the High or Low Volume position. Close the Velcro fastening over the battery box. Then touch any paw.

The LEAPFROG® Learning Path

Now you can get personalized/personalised insights into what and how your child is learning while playing with LEAPFROG® toys. To get started with the LEAPFROG Learning Path, follow the instructions on the LEAPFROG Connect home page to create a LEAPFROG Account. With the Learning Path, you can:

- See the skills your child is exploring during play
- Receive emails with learning tips that are tailored to your child
- Find learning toys that match your child's passions and interests
- Explore creative ideas to enrich and inspire learning



HOW TO PLAY

Learning Modes

My Pal Scout or Violet has 5 active areas.



Hugs Feature

Press the hearts or give the puppy a hug and Scout or Violet will share feelings and emotions with your child.



Daytime Songs Paw

Press the Daytime Songs paw to play upbeat sing-along songs and melodies. When you connect Scout or Violet to the computer, you can choose and download up to 5 songs at a time.



Activities Paw

Press the Activities paw to play and learn with Scout or Violet. The puppy will ask about your child's favorite/favourite things, count hiccups, pretend to be other animals and help your child learn about colors/colours.



Lullabies Paw

The Lullabies paw plays soothing lullaby music to transition from a day of active learning to naptime or nighttime. Parents can choose and change the songs found in the Lullabies paw by downloading any mix of up to five melodies from the lullaby music list found on the My Pal Scout and Violet LEAPFROG® Connect Application.

- Squeeze once to hear two minutes of music.
- Squeeze a second time to hear five minutes of music.
- Squeeze a third time to hear ten minutes of music.



On/Off Paw

Press the On/Off paw to turn off My Pal Scout or Violet. Press any paw to resume play mode.

Note: My Pal Scout or Violet will automatically turn off after a period of inactivity. You can wake up the puppy again by pressing any paw button. To turn Scout or Violet off so that pressing paws will not resume play, use the Power/Volume switch located on the battery box.

IMPORTANT INFORMATION

INSTRUCTIONS FOR CARE AND USE

Caring for My Pal Scout or Violet

Keep food and beverages away from product. Do not spill liquid of any kind on this product as it may render it inoperative. Clean with a slightly damp cloth (cold water). Do not use soap, detergent or other chemicals. **Never submerge the unit in water.** Allow to dry before re-use. Avoid prolonged exposure to extreme temperatures and direct sunlight. Avoid dropping the unit. Never try to dismantle it.

Cleaning My Pal Scout or Violet

Disconnect USB cable from puppy before cleaning. Clean with a slightly damp cloth (cold water). Do not use soap, detergent or other chemicals. Never submerge the product in water. Allow to dry before reuse.

Battery Information

Batteries included are for in-store demonstration and should be replaced for home use. Requires 3 AA (called LR6 in some countries) alkaline batteries.

Battery Removal and Installation Instructions

1. Open the battery door with a Phillips screwdriver.
2. If used or spent batteries are present, remove these batteries from the unit by pulling up on one end of each battery.
3. Install new batteries as shown in the polarity (+/-) diagram inside the battery compartment.
4. Replace battery door securely.

Informations sur les piles

Les piles incluses sont destinées à la démonstration en magasin et doivent être remplacées pour améliorer les performances du produit à la maison. Nécessite 3 piles alcalines AA (aussi appelées LR6 dans certains pays).

Retrait et installation des piles

1. Ouvrir le compartiment des piles à l'aide d'un tournevis.
2. S'il y a des piles usagées ou à plat, les retirer du compartiment en tirant sur l'une des extrémités à chaque pile.
3. Installer les nouvelles piles comme indiqué sur le schéma de polarité (+/-) reproduit à l'intérieur du compartiment de piles.
4. Bien refermer le couvercle du compartiment de piles.

SAFETY INSTRUCTIONS

Battery Safety

Batteries are small objects. Batteries must be replaced by an adult. Follow the polarity (+/-) diagram in the battery compartment. Promptly remove dead batteries from the product. Dispose of used batteries properly. Remove batteries for prolonged storage. Only batteries of the same or equivalent type as recommended are to be used.

DO NOT incinerate used batteries.

DO NOT dispose of batteries in fire, as batteries may explode or leak.

DO NOT mix old and new batteries or types of batteries (i.e., alkaline/standard).

DO NOT recharge non-rechargeable batteries.

DO NOT use rechargeable batteries. The product may not operate properly and may not function at all.

DO NOT short-circuit the supply terminals.

Sécurité relative aux piles

Les piles sont des objets de petite taille. Le remplacement des piles doit être effectué par un adulte. Respectez le schéma de polarité (+/-) reproduit dans le compartiment des piles. Enlevez rapidement les piles usagées du jouet. Suivez les procédures adéquates pour vous débarrasser des piles usagées. Retirez les piles en cas de non-usage prolongé. Utilisez uniquement des piles ou accumulateurs du type recommandé ou d'un type équivalent.

NE PAS incinérer les piles usagées.

NE PAS jeter les piles au feu car elles peuvent exploser ou fuir.

NE PAS mélanger piles usagées et piles neuves, ni différents types de piles (c'est-à-dire alcalines/standard).

NE PAS recharger des piles non rechargeables. Les piles rechargeables ne doivent être chargées que sous la supervision d'un adulte.

NE PAS utiliser de piles rechargeables. Le produit pourrait ne pas fonctionner correctement ou NE PAS fonctionner du tout.

NE PAS court-circuiter les terminaux d'alimentation.

USB Cable

Use only the USB cable provided by LeapFrog Enterprises, Inc. Using any other cable may exceed FCC and other regulatory emissions limits. The USB cable is not a toy. Cable provided is a shorter model to provide additional protection against strangulation. Only adults should connect the product to this cable.

! WARNING: The USB cable could be a strangulation hazard. Keep out of reach of children under 3 years of age. The USB cable must be used only by an adult when connecting to a computer and is to be removed by the adult prior to the use of the toy by a child. **DO NOT** allow child to play with the toy if the USB cable is attached.

Câble USB

Utilisez exclusivement le câble USB fourni par LeapFrog Enterprises, Inc. L'utilisation d'un autre câble peut dépasser les limites de la FCC (Commission fédérale américaine des communications) et les autres limites réglementaires en matière d'émission.

Le câble USB n'est pas un jouet. Le câble fourni est un modèle plus court afin de renforcer la protection contre l'étranglement. Seuls les adultes devraient connecter le produit à ce câble.

! AVERTISSEMENT : Le câble USB peut constituer un risque d'étranglement. Le garder hors de portée de tout enfant âgé de moins de 3 ans. Le câble USB ne doit être utilisé que par un adulte lors de la connexion à l'ordinateur et doit être enlevé par l'adulte avant qu'un enfant n'utilise le jouet. Ne pas autoriser un enfant à jouer avec le jouet si le câble USB y est accroché.

! CAUTION: Routinely check this product for proper and safe condition. If there is any damage or broken parts, remove product from use.

! ATTENTION : Vérifier régulièrement l'état et le fonctionnement de ce jouet afin d'en garantir la sécurité. S'il est cassé ou endommagé, même partiellement, ranger ce jouet hors de portée de votre enfant.

! CAUTION: This is not intended as a crib toy. To prevent entanglement injury NEVER add strings, ties or other products to this item.

! ATTENTION : Ce jouet n'est pas conçu pour les berceaux et les lits d'enfants à barreaux. Pour éviter tout danger d'enchevêtrement, ne JAMAIS rajouter de ficelles, rubans ou toute autre attache à ce jouet.

Minimum System Requirements

Internet connection (high-speed connection recommended)
Monitor resolution of 1024 x 768
Available USB port
512 MB of RAM (1 GB recommended)
300 MB free disk space
Latest version of Adobe® Flash® Player

PC Requirements:

Pentium® 4 or equivalent (2 GHz processor or faster recommended)
Windows® XP, Windows Vista® or Windows® 7 operating system with latest service pack

Mac Computer Requirements:

Intel®-based Apple computer (1 GHz processor or faster recommended)
Mac OS X 10.5+ operating system software

MAC, APPLE and MAC OS are trademarks of Apple Inc., registered in the U.S. and other countries.

TROUBLESHOOTING

Symptom	Try This
My Pal Scout or Violet does not turn on or does not respond	<ul style="list-style-type: none">• Make sure the Power/Volume switch is not in the OFF position• Make sure batteries are correctly installed• Make sure battery cover is securely attached• Remove batteries and put them back in• Clean battery contacts by rubbing lightly with a soft eraser and then wiping with a clean and dry cloth• Install new batteries• If USB cable is connected, remove it
My Pal Scout or Violet operates erratically or makes loud noises	<ul style="list-style-type: none">• Follow the above instructions to clean battery contacts• Turn Scout or Violet off and install new batteries
Computer does not detect My Pal even though USB cable is connected on both ends	<p><i>If you have the LEAPFROG® Connect Application for My Pals installed:</i></p> <ul style="list-style-type: none">• Check to see if the USB cable is pushed all the way into each of the ports• Disconnect and reconnect the USB cable to the toy. It might take a moment to recognize the toy• Disconnect all other devices with USB (other than the mouse and keyboard) then reconnect the toy• Try connecting the toy to a different USB port• Be sure to connect to a USB port and not a USB hub• Use the included USB cable <p><i>If you have not yet installed the LEAPFROG Connect Application for My Pals:</i></p> <ul style="list-style-type: none">• Download the application from leapfrog.com/MyPals• Install and run the application. Then follow the on-screen instructions• Disconnect and reconnect the USB cable to the toy

For a more detailed list of troubleshooting hints and other helpful information, go to leapfrog.com/support.

FCC Notice:

This device complies with Part 15 of the FCC rules. Operation is subject to the following two conditions:

- 1) This device may not cause harmful interference, and
- 2) This device must accept any interference received, including interference that may cause undesired operation.

NOTE: This equipment has been tested and found to comply with the limits for a Class B digital device, pursuant to part 15 of the FCC Rules. These limits are designed to provide reasonable protection against harmful interference in a residential installation. This equipment generates, uses and can radiate radio frequency energy and, if not installed and used in accordance with the instructions, may cause harmful interference to radio communications.

However, there is no guarantee that interference will not occur in a particular installation. If this equipment does cause harmful interference to radio or television reception, which can be determined by turning the equipment off and on, the user is encouraged to try to correct the interference by one or more of the following measures:

- Reorient or relocate the receiving antenna.
- Increase the separation between the equipment and receiver.
- Consult the dealer or an experienced radio/TV technician for help.

NOTE: Changes or modifications to this unit not expressly approved by LeapFrog Enterprises, Inc., could void the user's authority to operate the equipment.

Canada:

This Class B digital apparatus complies with Canadian ICES-003.
Cet appareil numérique de la classe B est conforme à la norme NMB-003 du Canada.

Environmental Phenomena

• The unit may malfunction if subjected to radio-frequency interference. It should revert to normal operation when the interference stops. If not, it may become necessary to turn the power off and back on, or remove and reinstall the batteries.

• In the unlikely event of an electrostatic discharge, the unit may malfunction and lose memory, requiring the adult to reset the device by removing and reinstalling the batteries.

Impact de l'environnement

• Une défaillance de fonctionnement de l'appareil peut survenir s'il est sujet à des interférences avec les fréquences radioélectriques. Le fonctionnement normal de l'appareil devrait reprendre avec l'arrêt des interférences. Si ce n'est pas le cas, il peut s'avérer nécessaire d'éteindre et rallumer l'appareil ou de retirer et réinstaller les piles.

• Dans l'éventualité peu probable d'une décharge électrostatique, un mauvais fonctionnement et une perte de mémoire de l'appareil peuvent se produire. L'adulte doit alors retirer et réinstaller les piles pour réinitialiser l'appareil.

CONSUMER SUPPORT

U.S. Consumer Service Contact: Visit our Consumer Support website at www.leapfrog.com/support 24 hours a day.

Canada Consumer Service Contact: Visit our Consumer Support website at www.leapfrog.ca/support 24 hours a day.

U.K. Consumer Service Contact: Visit our Consumer Support website at www.leapfrog.co.uk/support 24 hours a day.

Australia Consumer Service Contact: Please submit questions to our support staff via email at info@funtastic.com.au.

LIMITED WARRANTY: Subject to a limited three (3) month warranty. Visit our website at www.leapfrog.com for full details of the warranty provided in your country. LeapFrog shall not be liable for any incidental or consequential damages for the breach of any warranty on this product. Some jurisdictions do not allow the exclusion or limitation of incidental or consequential damages, or limitation on how long an implied warranty lasts, so the above limitations or exclusions may not apply to you.

RECYCLE INFORMATION : For information on how this product might be recycled, visit www.leapfrog.com/recycle or call (800) 701-5327.

GARANTIE LIMITÉE : Ce produit est soumis à une garantie limitée de trois (3) mois. Veuillez consulter notre site Web à l'adresse www.leapfrog.com pour obtenir l'intégralité des informations de garantie fournies dans votre pays. LeapFrog ne sera pas tenu responsable des dommages consécutifs ou indirects induits par la violation de toute garantie sur ce produit. Certaines juridictions n'autorisant pas l'exclusion ou la limitation des dommages consécutifs ou indirects, ni même la limitation de la durée des garanties implicites, il est donc possible que les limitations ou exclusions ci-dessus ne s'appliquent pas à votre cas.

LEAPFROG, the LeapFrog logo, the LeapFrog Learning Path logo, SEE THE LEARNING, FRIDGE PHONICS, TAG, the Tag logo and the Tag Junior logo are trademarks or registered trademarks of LeapFrog Enterprises, Inc. © 2011 LeapFrog Enterprises, Inc. All rights reserved.

leapfrog.com



Model Number 19156 for Scout or Model Number 19157 for Violet.
LeapFrog Enterprises, Inc., 6401 Hollis Street, Emeryville, CA 94608 USA
(800) 701-LEAP (5327)

For ages 6-36 months. / Convient aux enfants de 6 à 36 mois.

Part number: 605-11778-A

Item Number: 19156 (My Pal Scout) or 19157 (My Pal Violet)